

Anti-Aldolase C (Zebrin II)

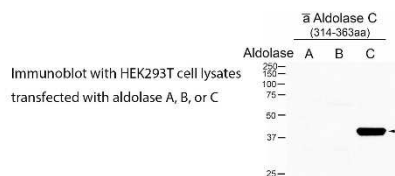
Code Number : AldolaseC-Rb-Af1390 (rabbit, RRID : AB_2571658)
 : AldolaseC-Go-Af800 (goat, RRID : AB_2571659)
 : AldolaseC-GP-Af1330 (guinea pig, RRID : AB_2571660)

Size : 20 µg and 50 µg / See label on vial
 (affinity-purified with antigen polypeptide)

Formulation : Liquid ; 200 µg/ml in PBS with 0.05% NaN₃.

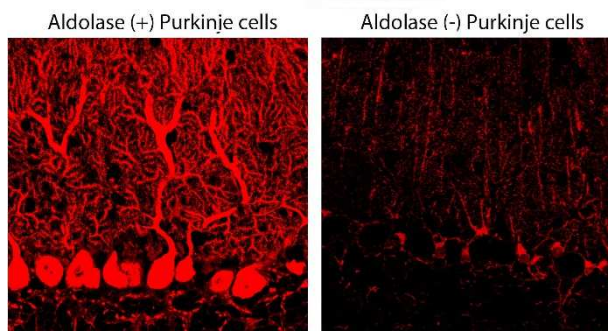
Storage : Store at 4°C. The antibody can be stored at 4°C. The antibody can be also aliquotted and stored at -80°C for long-term storage. Avoid repeated freeze-thawing. Non-hazardous. No MSDS required.

Species : rabbit / guinea pig / goat,
 polyclonal



Antigen : mouse, C-terminus 50 aa
 (314-363aa, NM 009657)

Specificity : mouse (others not tested)
 Cerebellum is banded With zebrin (+)
 and (-) Purkinje cells. In other regions,
 aldolase C is expressed in astrocytes.



Applications : In general, affinity-purified antibody is used at around 1 microgram/ml for immunoblot and immunohistochemistry. The most appropriate concentration should be determined by users, because it depends on contents in given cells, tissues and organs.

Research Use : For research use only, not for use in diagnostic procedures.

Remarks :

Reference : Tsutsumi S, Yamazaki M, Miyazaki T, Watanabe M, Sakimura K, Kano M, Kitamura K. Structure-function relationships between aldolase C/zebrin II expression and complex spike synchrony in the cerebellum. *J Neurosci.* 35:843-852, 2015.