

Anti-CAST1

(ELKS/RAB6-interacting/CAST family member-1)

Code Number : CAST-Rb-Af460 (rabbit, RRID : AB_2571670)
: CAST-GP-Af850 (guinea pig, RRID : AB_2571671)

Size : 20 µg and 50 µg / See label on vial
(affinity-purified with antigen polypeptide)

Formulation : Liquid ; 200 µg/ml in PBS with 0.05% NaN₃.
(affinity-purified with antigen polypeptide)

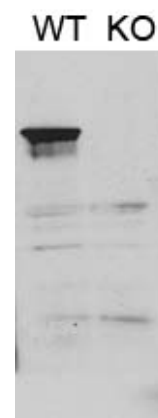
Storage : Store at 4°C. The antibody can be stored at 4°C. The antibody can be also aliquotted and stored at -80°C for long-term storage. Avoid repeated freeze-thawing. Non-hazardrous. No MSDS required.

Species : rabbit / guinea pig, polyclonal

Antigen : mouse CAST1, 113-161 aa (NM_178085)

Specificity : mouse (others not tested)

Immunoblot detects a single protein band at 120 kDa in wild-type, but not CAST1-knockout, brains. This antibody labels presynaptic active zone in in wild-type, but not CAST1-knockout, brains. (see reference 1).



Applications : In general, affinity-purified antibody is used at around 1 microgram/ml for immunoblot and immunohistochemistry. The most appropriate concentration should be determined by users, because it depends on contents in given cells, tissues and organs.

Research Use : For research use only, not for use in diagnostic procedures.

Remarks :

Reference : 1) Uchigashima M, Ohtsuka T, Kobayashi K, Watanabe M. Striatal dopamine synapses are neuroligin-2-mediated contact between dopaminergic presynaptic and GABAergic postsynaptic structures. *Proc Natl Acad Sci USA*, in press