

Anti-CK-Mi*(ubiquitous mitochondrial creatine kinase)*

Code Number : CKMi-Rb-Af568 (rabbit, RRID : AB_2571681)

: CKMi-GP-Af516 (guinea pig, RRID : AB_2571682)

Size : 20 µg and 50 µg / See label on vial

(affinity-purified with antigen polypeptide)

Formulation : Liquid ; 200 µg/ml in PBS with 0.05% NaN₃.

(affinity-purified with antigen polypeptide)

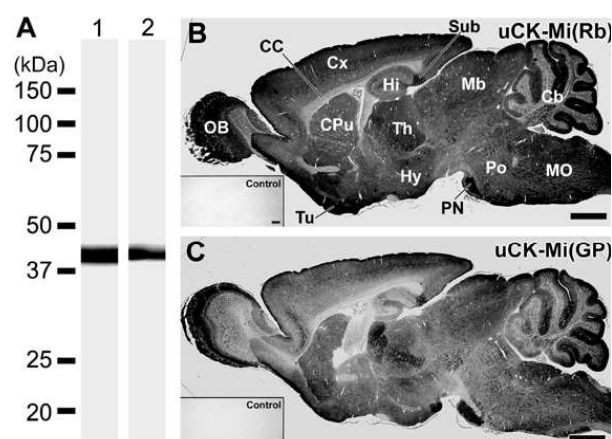
Storage : Store at 4°C. The antibody can be stored at 4°C. The antibody can be also aliquotted and stored at -80°C for long-term storage. Avoid repeated freeze-thawing. Non-hazardous. No MSDS required.

Species : rabbit / guinea pig, polyclonal

Antigen : mouse CK-Mi, 386-418 aa
(BC025976)

Specificity : Mouse (others not tested)

Immunoblot detects a single protein band at 42 kDa. This stains neuronal mitochondria distributed in dendrites, cell bodies, axons, and terminals.



Applications : In general, affinity-purified antibody is used at around 1 microgram/ml for immunoblot and immunohistochemistry. The most appropriate concentration should be determined by users, because it depends on contents in given cells, tissues and organs.

Research Use : For research use only, not for use in diagnostic procedures.

Remarks : Rabbit and guinea pig antibodies are similar in titer and specificity.

Reference : Tachikawa, M., Fukaya, M., Terasaki, T., Ohtsuki, S., Watanabe, M. (2004) Distinct cellular expressions of creatine synthetic enzyme GAMT and creatine kinases uCK-Mi and

CK-B suggest novel neuron-glia relationship for brain energy homeostasis. *Eur. J. Neurosci.*, 20:144-160.