

***Anti-GIRK2***

(Kir3.2 ; G-protein-coupled inward rectifier potassium channel-2)

Code Number : GIRK2-Rb-Af290 (rabbit, RRID : AB\_2571712)

: GIRK2-GP-Af830 (guinea pig, RRID : AB\_2571713)

Size : 20 µg and 50 µg / See label on vial

(affinity-purified with antigen polypeptide)

Formulation : Liquid ; 200 µg/ml in PBS with 0.05% NaN<sub>3</sub>.

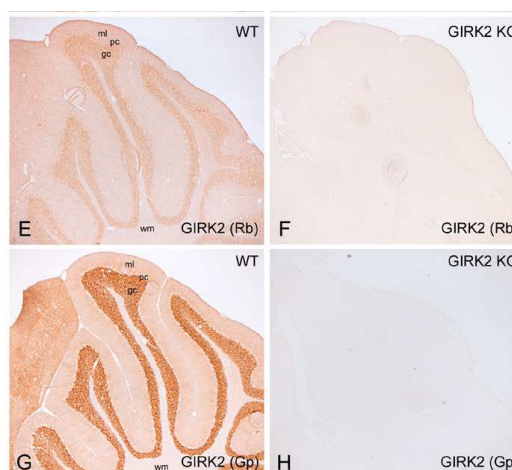
Storage : Store at 4°C. The antibody can be stored at 4°C. The antibody can be also aliquotted and stored at -80°C for long-term storage. Avoid repeated freeze-thawing. Non-hazardous. No MSDS required.

Species : rabbit / guinea pig, polyclonal

Antigen : mouse GIRK2A-1 C-terminal 32 aa  
(390-421aa: KLNQHAELETEEEEEKNPEELT  
ERNGDVANLEN; U51126)

Specificity : mouse (others not tested)

Immunoblot detects doublet at ~49 kDa, with the upper band showing stronger labeling. All immunohistochemical staining disappear in GIRK2-KO cerebellum.



Applications : In general, affinity-purified antibody is used at around 1 microgram/ml for immunoblot and immunohistochemistry. The most appropriate concentration should be determined by users, because it depends on contents in given cells, tissues and organs.

Research Use : For research use only, not for use in diagnostic procedures.

Remarks : Guinea pig antibody is higher in titer than rabbit one.

Reference : 1) Aguado C, Colón J, Ciruela F, Schlaudraff F, Cabañero MJ, Perry C, Watanabe M, Liss B, Wickman K, Luján R. Cell type-specific subunit composition of G-protein-gated

potassium channels in the cerebellum. J Neurochem. 105:497-511, 2008

2) The above pictures are provided from Dr. Rafael Lujan in Universidad de Castilla-La mancha, Spain