

***Anti- GLUT3 (Slc2a3)****(Glucose transporter 3)*

Code Number : GLUT3-Rb-Af660 (rabbit, RRID : AB\_2571861)

: GLUT3-GP-Af720 (guinea pig, RRID : AB\_2571862)

Size : 20 µg and 50 µg / See label on vial

(affinity-purified with antigen polypeptide)

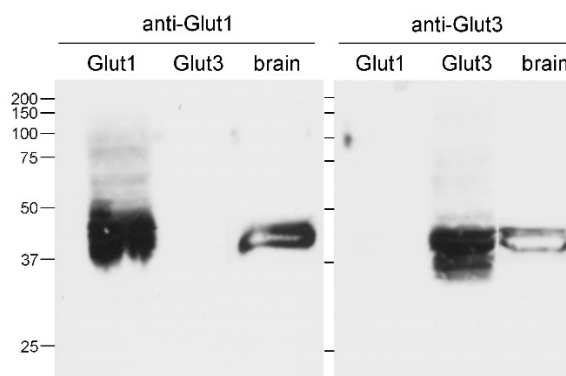
Formulation : Liquid ; 200 µg/ml in PBS with 0.05% NaN<sub>3</sub>.

Storage : Store at 4°C. This antibody can be stored at 4°C. The antibody can be also aliquotted and stored at -80°C for long-term storage. Avoid repeated freeze-thawing. Non-hazardous. No MSDS required.

Species : rabbit / guinea pig, polyclonal

Antigen : mouse Glucose transporter 3,  
C-terminal 35 aa (NM\_011401)

Specificity : Immunoblot detects a single protein band at 40 kDa in the brain. Immunohistochemistry detects GLUT3 in specific types of cells in various tissues, such as cells in the subfornical organ and sperm in the testis. No cross-reactivity to GLUT3 is confirmed in HEK cells transfected with GLUT1 or GLUT3 cDNA.



Applications : In general, affinity-purified antibody is used at around 1 microgram/ml for immunoblot and immunohistochemistry. The most appropriate concentration should be determined by users, because it depends on contents in given cells, tissues and organs.

Research Use : For research use only, not for use in diagnostic procedures.

Remarks :

**Reference** : 1) Kishimoto A, Ishiguro-Oonuma T, Takahashi R, Maekawa M, Toshimori K, Watanabe M, Iwanaga T (2015) Immunohistochemical localization of GLUT3, MCT1, and MCT2 in the testes of mice and rats: the use of different energy sources in spermatogenesis. **Biomed Res.** 36:225-234.