

Anti-Glutaminase

Code Number : GltN-Rb-Af340 (rabbit, RRID : AB_2571765)
 : GltN-GP-Af330 (guinea pig, RRID : AB_2571766)

Size : 20 µg and 50 µg / See label on vial
(affinity-purified with antigen polypeptide)

Formulation : Liquid ; 200 µg/ml in PBS with 0.05% NaN₃.

Storage : Store at 4°C. This antibody can be stored at 4°C. The antibody can be also aliquotted and stored at -80°C for long-term storage. Avoid repeated freeze-thawing. Non-hazardrous. No MSDS required.

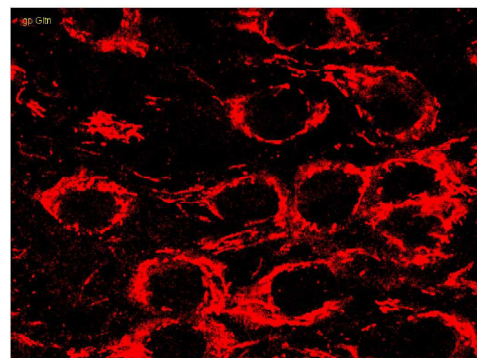
Species : rabbit / guinea pig, polyclonal

Antigen : mouse glutaminase,
C-terminal 155 aa (M65150)

Specificity : mouse (others not tested)

Immunoblot detects a single protein band at 65 kDa. This preferentially stains mitochondria in glutamatergic neurons, at least, in the hippocampus and cerebellum, thus being used as a glutamatergic neuronal marker.

guinea pig anti-glutaminase



Applications : In general, affinity-purified antibody is used at around 1 microgram/ml for immunoblot and immunohistochemistry. The most appropriate concentration should be determined by users, because it depends on contents in given cells, tissues and organs.

Research Use : For research use only, not for use in diagnostic procedures.

Remarks : If you have no special preference for species, rabbit antibody is primarily recommended.

Reference : Hoshino, M., Nakamura, S., Mori, K., Kawauchi, T., Terao, M., Nishimura, Y.V.,

Fukuda, A., Fuse, T., Matsuo, N., Sone, M., Watanabe, M., Bito, H., Terashima, T., Wright, C.V.E., Kawaguchi, Y., Nakao, K., Nabeshima, Y. (2005) Ptf1a, a bHLH transcriptional gene, defines GABAergic neuronal fates in cerebellum. *Neuron*, 47: 201-213.