

## *Anti-IP<sub>3</sub>R1*

*(inositol 1,4,5-trisphosphate receptor 1)*

**Code Number** : IP3R1-Rb-Af860 (rabbit, RRID : AB\_2571778)  
: IP3R1-Go-Af820 (goat, RRID : AB\_2571779)

**Size** : 20 µg and 50 µg / See label on vial  
(affinity-purified with antigen polypeptide)

**Formulation** : Liquid ; 200 µg/ml in PBS with 0.05% NaN<sub>3</sub>.

**Storage** : Store at 4°C. The antibody can be stored at 4°C. The antibody can be also aliquotted and stored at -80°C for long-term storage. Avoid repeated freeze-thawing. Non-hazardous. No MSDS required.

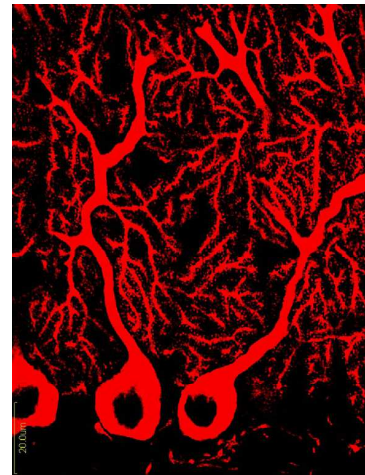
**Species** : rabbit / goat, polyclonal

**Antigen** : mouse IP3R1, C-terminal 69 aa  
2681-2749 (NM010585)

**Specificity** : mouse (others not tested)

Immunoblot detects a single protein band at  
300~ kDa.

This stains Purkinje cell dendrites and soma  
strongly, and weakly in axons.



**Applications** : In general, affinity-purified antibody is used at around 1 microgram/ml for immunoblot and immunohistochemistry. The most appropriate concentration should be determined by users, because it depends on contents in given cells, tissues and organs.

**Research Use** : For research use only, not for use in diagnostic procedures.

**Remarks** : rabbit and goat antibodies are similar in titer and specificity.

**Reference** : 1) Nakamura, M., Sato, K., Fukaya, M., Araishi, K., Aiba, A., Kano, M., Watanabe, M. (2004) Signaling complex formation of phospholipase Cβ4 with mGluR1α and IP3R1 at the perisynapse and endoplasmic reticulum in the mouse brain. *Eur. J. Neurosci* 20:2929-2944.

2) Nomura S, Fukaya M, Tsujioka T, Wu D, Watanabe M (2007) Phospholipase Cb3 is distributed in both somatodendritic and axonal compartments and localized around perisynapse and smooth endoplasmic reticulum in mouse Purkinje cell subsets. **Eur. J. Neurosci.** 25:659-672