

Anti-KCC2*(type-2 K⁺-Cl⁻ cotransporter)*

Code Number : KCC2-Rb-Af720 (931-971aa, rabbit, RRID : AB_2571782)
 : KCC2-Rb-Af300 (1011-1042aa, rabbit, RRID : AB_2571783)
 : KCC2-Go-Af1060 (931-971aa, goat, RRID : AB_2571784)
 : KCC2-Go-Af1300 (1011-1042aa, goat, RRID : AB_2571785)
 : KCC2-GP-Af370 (931-971aa, guinea pig, RRID : AB_2571786)

Size : 20 µg and 50 µg / See label on vial
 (affinity-purified with antigen polypeptide)

Formulation : Liquid ; 200 µg/ml in PBS with 0.05% NaN₃.

Storage : Store at 4°C. The antibody can be stored at 4°C. The antibody can be also aliquotted and stored at -80°C for long-term storage. Avoid repeated freeze-thawing. Non-hazardrous. No MSDS required.

Species : rabbit / guinea pig / goat, polyclonal

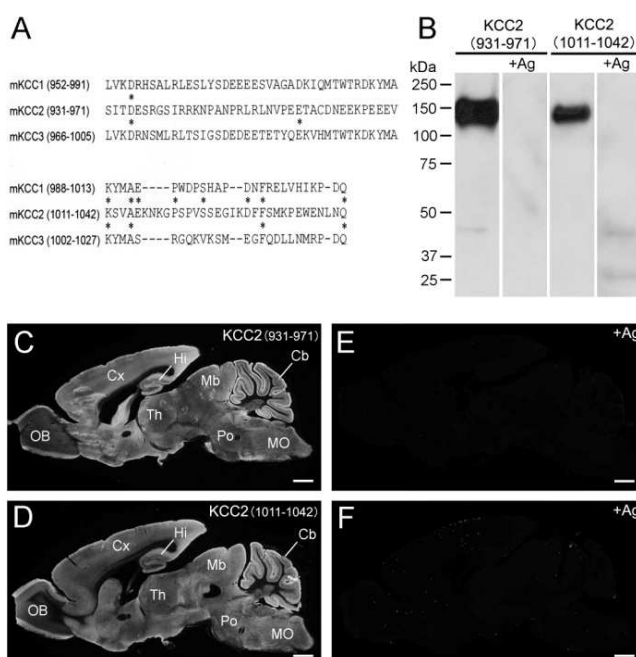
Antigen : mouse KCC2, C-terminal 931-971aa and 1011-1042 aa (NM_020333)

Specificity : mouse (others not tested)

Immunoblot detects a single protein band at 130-140 kDa.

Immunolabeling by immunohistochemistry and immunoblot disappears by preabsorption of KCC2 antibodies with the corresponding antigens.

Applications : In general, affinity-purified antibody is used at around 1 microgram/ml for immunoblot and immunohistochemistry. The most appropriate concentration should be determined by users, because it depends on contents in



given cells, tissues and organs.

Research Use : For research use only, not for use in diagnostic procedures.

Remarks :

Reference : 1) Kawakita I, Uchigashima M, Konno K, Miyazaki T, Yamasaki M, Watanabe M: KCC2 is preferentially recruited to climbing fiber synapse during development and stellate cell-targeting dendritic zone at adulthood in cerebellar Purkinje cells. **Eur. J. Neurosci.**, 37: 532-543, 2012.