

## *Anti-MCT1*

(*monocarboxylate transporter-1* or *Slc16a1*)

Code Number : MCT1-Rb-Af900 (rabbit, RRID : AB\_2571794)

: MCT1-GP-Af950 (guinea pig, RRID : AB\_2571795)

Size : 20 µg and 50 µg / See label on vial

(affinity-purified with antigen polypeptide)

Formulation : Liquid ; 200 µg/ml in PBS with 0.05% NaN<sub>3</sub>.

Storage : Store at 4°C. The antibody can be stored at 4°C.

The antibody can be also aliquotted and stored at -80°C for long-term storage. Avoid repeated freeze-thawing.

Non-hazardous. No MSDS required.

Species : rabbit, polyclonal 469-493aa

(NM\_009196)

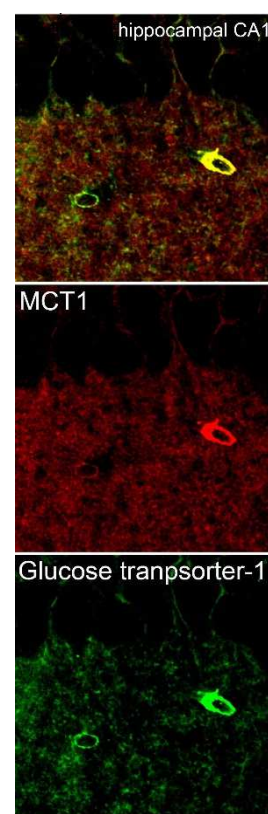
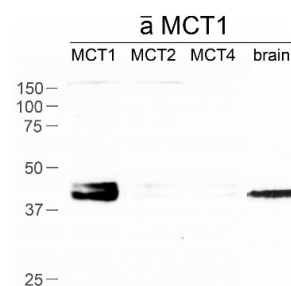
Specificity : mouse (others not tested)

The specificity of MCT1 antibody was confirmed by selective detection of 40kDa band in HEK293T lysates transfected with MCT1, but not MCT2 or MCT4 and in brain homogenates. In immunohistochemistry, MCT1 is detected in a cell-type dependent manner, for example, capillary in the brain and spermatogonia in the testis. MCT1 is well overlapped with glucose transporter-1 in the adult brain.

Applications : In general, affinity-purified antibody is used at around 1 microgram/ml for immunoblot and immunohistochemistry.

The most appropriate concentration should be determined by users, because it depends on contents in given cells, tissues and organs.

Research Use : For research use only, not for use in diagnostic



Research & Development

**FRONTIER INSTITUTE co.,Ltd.**

FRONTIER INSTITUTE Co.Ltd  
1-777-12,Shinko-nishi,Ishikari,Hokkaido 061-3241 Japan  
TEL (0)133-73-9194 FAX (0)133-73-4567  
e-mail : info@frontier-institute.com  
URL : <http://www.frontier-institute.com/>

procedures.

**Remarks :**

**Reference :** 1) Kaji I, Iwanaga T, Watanabe M, Guth P, Engel E, Kaunitz J, Akiba Y: SCFA transport in rat duodenum. **Am J Physiol Gastrointest Liver Physiol**, 308:G188-197, 2015.