

***Anti-MPP2****(membran palmitoylated protein 2)*

**Code Number** : MPP2-Rb-Af710 (rabbit, RRID : AB\_2616566)  
 : MPP2-Rb-Af910 (rabbit, RRID : AB\_2616567)

**Size** : 20 µg and 50 µg / See label on vial  
 (affinity-purified with antigen polypeptide)

**Formulation** : Liquid ; 200 µg/ml in PBS with 0.05% NaN<sub>3</sub>.  
 (affinity-purified with antigen polypeptide)

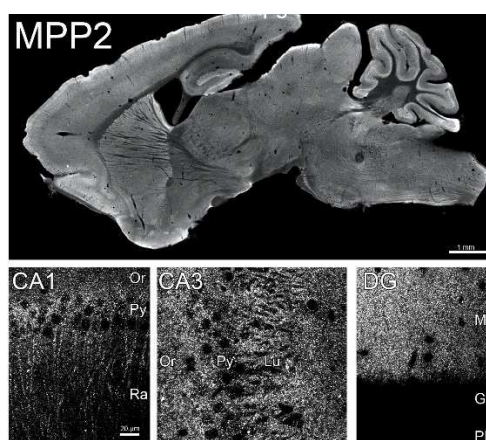
**Storage** : Store at 4°C. The antibody can be stored at 4°C. The antibody can be also aliquotted and stored at -80°C for long-term storage. Avoid repeated freeze-thawing. Non-hazardrous. No MSDS required.

**Species** : rabbit, polyclonal

**Antigen** : mouse MPP2,  
 116-145aa for MPP2-Rb-Af710,  
 480-507aa for MPP2-Rb-Af910  
 (NP\_057904)

**Specificity** : mouse (others not tested)

Both MPP2 antibodies detect a 55kDa protein band in brain homogenates, and 60kDa band in HEK293 cell lysates transfected with MPP2. Preabsorption of these antibodies with the corresponding antigen polypeptides abolish these bands (see the reference 1).



**Applications** : In general, affinity-purified antibody is used at around 1 microgram/ml for immunoblot and immunohistochemistry. The most appropriate concentration should be determined by users, because it depends on contents in given cells, tissues and organs.

**Research Use** : For research use only, not for use in diagnostic procedures.

**Remarks** : MPP2 is a novel synaptic scaffold that interacts with SK2 channels and co-expressed with it at the postsynaptic density of excitatory synapses. Knockdown of MPP2 abolishes SK2 channel-mediated contribution to synaptic responses and reduces long-term potentiation.

**Reference** : 1) Kim G, Luján R, Schwenk J, Kelley M, Aguado C, Watanabe M, Fakler B, Maylie J, Adelman JP: Membrane palmitoylated protein 2 is a synaptic scaffold protein required for synaptic SK2-containing channel function. **eLife** **e12637**, 2016.