

Anti-NAPE-PLD

(*N*-acylphosphatidylethanolamine-hydrolyzing phospholipase D)

Code Number : NAPE-PLD-GP-Af720 (guinea pig, RRID : AB_2571806)

Size : 20 µg and 50 µg / See label on vial
(affinity-purified with antigen polypeptide)

Formulation : Liquid ; 200 µg/ml in PBS with 0.05% NaN₃.
(affinity-purified with antigen polypeptide)

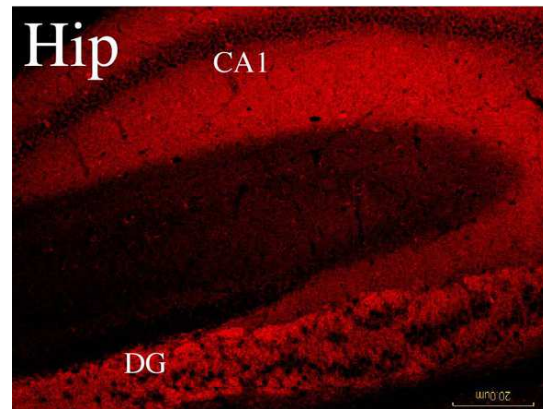
Storage : Store at 4°C. The antibody can be stored at 4°C. The antibody can be also aliquotted and stored at -80°C for long-term storage. Avoid repeated freeze-thawing. Non-hazardous. No MSDS required.

Species : guinea pig, polyclonal

Antigen : mouse N-terminal 1-41aa
(AB112350)

Specificity : mouse (others not tested)

Immunoblot detects a protein band around at 45 kDa. This selectively wild-type mouse brains, but not NAPE-PLD-knockout brains by immunohistochemistry.



Applications : In general, affinity-purified antibody is used at around 1 microgram/ml for immunoblot and immunohistochemistry. The most appropriate concentration should be determined by users, because it depends on contents in given cells, tissues and organs.

Research Use : For research use only, not for use in diagnostic procedures.

Remarks :

Reference : Nyilas R, Dudok B, Urbán GM, Mackie K, Watanabe M, Cravatt BF, Freund TF, Katona I: Enzymatic machinery for endocannabinoid biosynthesis associated with calcium stores in glutamatergic axon terminals. *J Neurosci* 28:1058-1063, 2008

