

## *Anti-NET*

*(plasmalemmal norepinephrine transporter)*

**Code Number** : NET-Go-Af590 (goat, RRID : AB\_2571809)

: NET-GP-Af1500 (guinea pig, RRID : AB\_2571810)

**Size** : 20 µg and 50 µg / See label on vial

(affinity-purified with antigen polypeptide)

**Formulation** : Liquid ; 200 µg/ml in PBS with 0.05% NaN<sub>3</sub>.

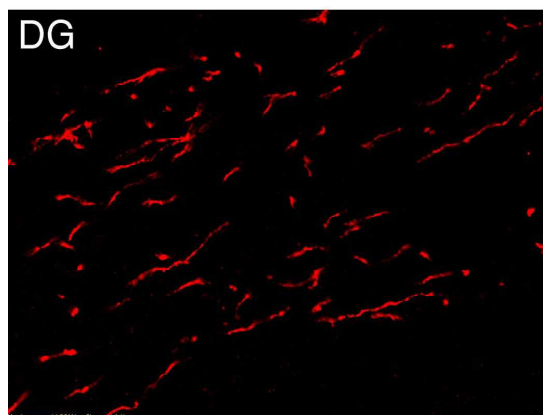
**Storage** : Store at 4°C. The antibody can be stored at 4°C. The antibody can be also aliquotted and stored at -80°C for long-term storage. Avoid repeated freeze-thawing. Non-hazardous. No MSDS required.

**Species** : guinea pig / goat, polyclonal

**Antigen** : mouse NET, 1--56 aa  
(NM009209)

**Specificity** : mouse (others not tested)

Immunoblot detects a single protein band at 45 kDa. This selectively stains adrenergic neurons and fibers.



**Applications** : In general, affinity-purified antibody is used at around 1 microgram/ml for immunoblot and immunohistochemistry. The most appropriate concentration should be determined by users, because it depends on contents in given cells, tissues and organs.

**Research Use** : For research use only, not for use in diagnostic procedures.

**Remarks** : Guinea pig and goat antibodies are similar in titer and specificity.

**Reference** : Uchigashima M, Narushima M, Fukaya M, Katona I, Kano M, Watanabe M: (2007) Subcellular arrangement of molecules for 2-arachidonoyl-glycerol-mediated retrograde signaling and its physiological contribution to synaptic modulation in the striatum. *J.Neurosci.*27:3663-3676.