

Anti-PKC α *(protein kinase C α)*

Code Number : PKCa-Rb-Af640 (rabbit, RRID : AB_2571819)
 : PKCa-Go-Af850 (goat, RRID : AB_2571820)
 : PKCa-GP-Af870 (guinea pig, RRID : AB_2571821)

Size : 20 μ g and 50 μ g / See label on vial
 (affinity-purified with antigen polypeptide)

Formulation : Liquid ; 200 μ g/ml in PBS with 0.05% NaN₃.
 (affinity-purified with antigen polypeptide)

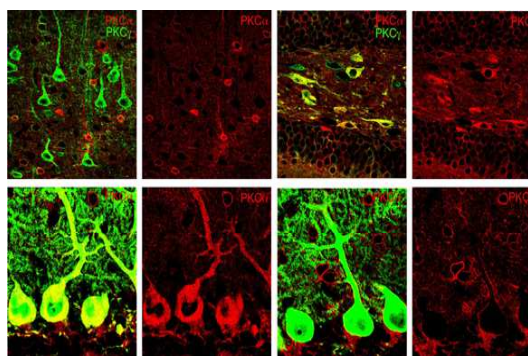
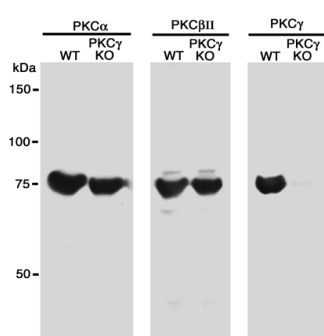
Storage : Store at 4°C. The antibody can be stored at 4°C. The antibody can be also aliquotted and stored at -80°C for long-term storage. Avoid repeated freeze-thawing. Non-hazardrous. No MSDS required.

Species : rabbit / guinea pig / goat, polyclonal

Antigen : mouse PKC α , 660-672 aa (M25811)

Specificity : mouse (others not tested)

Immunoblot detects a single band at 75 kDa.



Applications : In general, affinity-purified antibody is used at around 1 microgram/ml for immunoblot and immunohistochemistry.

The most appropriate concentration should be determined by users, because it depends on contents in given cells, tissues and organs.

Research Use : For research use only, not for use in diagnostic procedures.

Remarks : Rabbit, guinea pig, and goat PKC α antibodies are equal in specificity and titer.

Reference : 1) Nakano T, Hozumi Y, Ali H, Saino-Saito S, Kamii H, Sato S, Kayama T, Watanabe M, Kondo H, Goto K. Diacylglycerol kinase zeta is involved in the process of cerebral infarction. (2006) *Eur. J. Neurosci.* 23:1427-35.