

Anti-PKC γ *(protein kinase C γ)*

Code Number : PKCg-Rb-Af400 (rabbit, RRID : AB_2571824)
 : PKCg-Go-Af840 (goat, RRID : AB_2571825)
 : PKCg-GP-Af350 (guinea pig, RRID : AB_2571826)

Size : 20 μ g and 50 μ g / See label on vial
 (affinity-purified with antigen polypeptide)

Formulation : Liquid ; 200 μ g/ml in PBS with 0.05% NaN₃.

Storage : Store at 4°C. The antibody can be stored at 4°C. The antibody can be also aliquotted and stored at -80°C for long-term storage. Avoid repeated freeze-thawing. Non-hazardrous. No MSDS required.

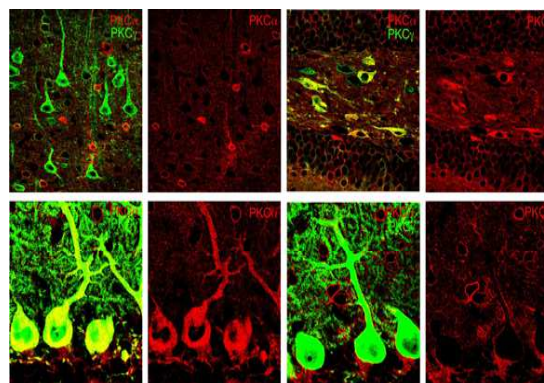
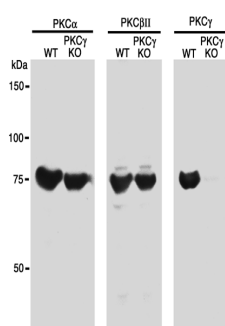
Species : rabbit / guinea pig / goat, polyclonal

Antigen : mouse PKC γ , 684-697 aa (L28035)

Specificity : mouse (others not tested)

Immunoblot detects a single band at 75 kDa.

Applications : In general, affinity-purified antibody is used at around 1 microgram/ml for immunoblot and immunohistochemistry. The most appropriate concentration should be determined by users, because it depends on contents in given cells, tissues and organs.



Research Use : For research use only, not for use in diagnostic procedures.

Remarks : Rabbit, guinea pig, and goat PKC γ antibodies are equal in specificity and titer.

Reference : 1) Yoshida, T., Fukaya, M., Uchigashima, M., Kamiya, H., Kano, M., Watanabe, M. (2006) Localization of diacylglycerol lipase- α around postsynaptic spine suggests close proximity between production site of an endocannabinoid, 2-arachidonoyl-glycerol, and presynaptic cannabinoid CB1 receptor. *J. Neurosci.* 26: 4740-4751.

2) Nomura S, Fukaya M, Tsujioka T, Wu D, Watanabe M: Phospholipase C β 3 is distributed in both somatodendritic and axonal compartments and localized around perisynapse and smooth endoplasmic reticulum in mouse Purkinje cell subsets. *Eur. J. Neurosci*, in press