

Anti-PLC β 3*(phospholipase C β 3)*Code Number : PLC β 3-Rb-Af599 (rabbit, RRID : AB_2571829): PLC β 3-GP-Af1249 (guinea pig, RRID : AB_2571830)Size : 20 μ g and 50 μ g / See label on vial

(affinity-purified with antigen polypeptide)

Formulation : Liquid ; 200 μ g/ml in PBS with 0.05% NaN₃.

Storage : Store at 4°C. The antibody can be stored at 4°C. The antibody can be also aliquotted and stored at -80°C for long-term storage. Avoid repeated freeze-thawing. Non-hazardrous. No MSDS required.

Species : rabbit / guinea pig, polyclonal

Antigen : mouse PLC β 3, 1201-1234 aa
(NM008874)

Specificity : mouse (others not tested)

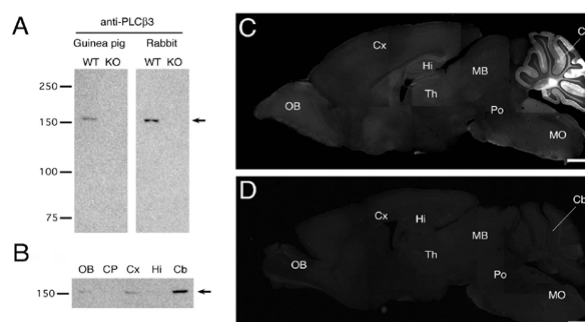
Immunoblot detects a single band at 157 kDa.

The specificity was verified by blank immunostaining in PLC β 3-KO brains.

Applications : In general, affinity-purified antibody is used at around 1 microgram/ml for immunoblot and immunohistochemistry. The most appropriate concentration should be determined by users, because it depends on contents in given cells, tissues and organs. In use of cryosections and microslicer sections, pretreatment of dipping sections in 1:3 methanol, 3:1 methanol, and pure methanol for 3 min each will greatly enhance immunohistochemical signals for PLC β .

Research Use : For research use only, not for use in diagnostic procedures.

Remarks : If you have no special preference for species, guinea pig antibody is primarily recommended. This rabbit antibody yields slightly higher signals and background as well.

Reference : Nomura S, Fukaya M, Tsujioka T, Wu D, Watanabe M: Phospholipase C β 3 is

distributed in both somatodendritic and axonal compartments and localized around perisynapse and smooth endoplasmic reticulum in mouse Purkinje cell subsets. **Eur. J. Neurosci**, in press