

*Anti- S100 $\beta$* 

**Code Number** : S100 $\beta$ -Rb-Af1000 (rabbit, RRID : AB\_2725784)

: S100 $\beta$ -GP-Af630 (guinea pig, RRID : AB\_2725785)

**Size** : 20  $\mu$ g and 50  $\mu$ g / See label on vial  
(affinity-purified with antigen polypeptide)

**Formulation** : Liquid ; 200  $\mu$ g/ml in PBS with 0.05% NaN<sub>3</sub>.

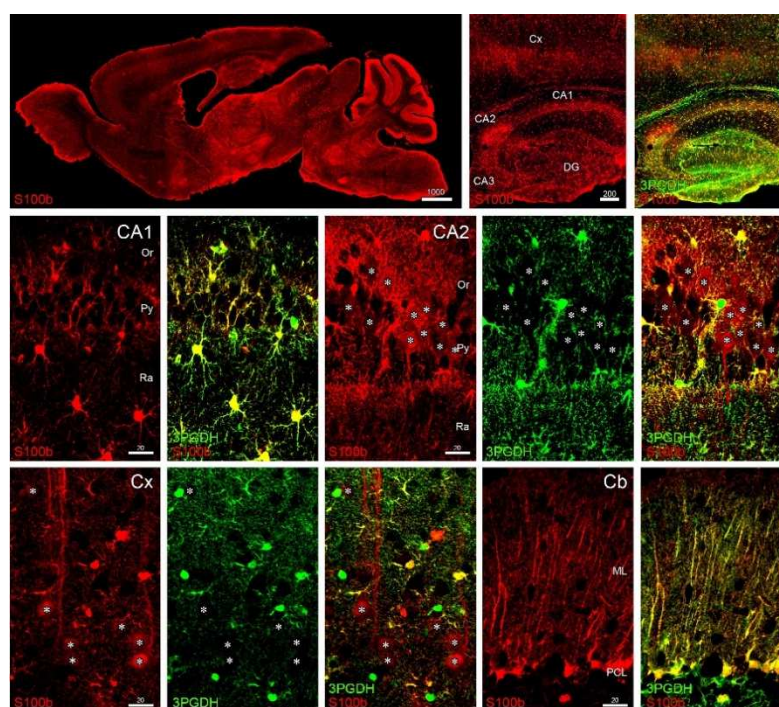
**Storage** : Store at 4°C. The antibody can be stored at 4°C. The antibody can be also aliquotted and stored at -80°C for long-term storage. Avoid repeated freeze-thawing. Non-hazardrous. No MSDS required.

**Species** : rabbit / guinea pig, polyclonal

**Antigen** : mouse S100 $\beta$ , 1-92aa, (NM\_009115)

**Specificity** : mouse (others not tested)

S100 $\beta$  is exclusively expressed in astrocytes, and thus overlap with 3-phosphoglycerate dehydrogenase (3PGDH), an L-serine biosynthetic enzyme electively expressed in astrocytes, never in neurons. However, S100 $\beta$  is also expressed weakly in some cortical neurons.



**Applications** : In general, affinity-purified antibody is used at around 1 microgram/ml for immunoblot and immunohistochemistry. The most appropriate concentration should be determined by users, because it depends on contents in given cells, tissues and organs.

**Remarks** : If you have no preference for species, this rabbit antibody is better to choose

**Research Use** : For research use only, not for use in diagnostic procedures.

**Reference** : in press