

Anti-TPH2

(tryptophan hydroxylase 2)

Code Number : TPH2-Rb-Af250 (rabbit, RRID : AB_2665531)

: TPH2-GP-Af900 (guinea pig, RRID : AB_2665532)

Size : 20 µg and 50 µg / See label on vial
(affinity-purified with antigen polypeptide)

Formulation : Liquid ; 200 µg/ml in PBS with 0.05% NaN₃.

Storage : Store at 4°C. The antibody can be stored at 4°C. The antibody can be also aliquotted and stored at -80°C for long-term storage. Avoid repeated freeze-thawing. Non-hazardous. No MSDS required.

Species : rabbit / guinea pig, polyclonal

Antigen : mouse TPH2, (NCBI NM_173391)

41-61 aa (TPH2-GP-Af900), 466-488 aa (TPH2-Rb-Af250)

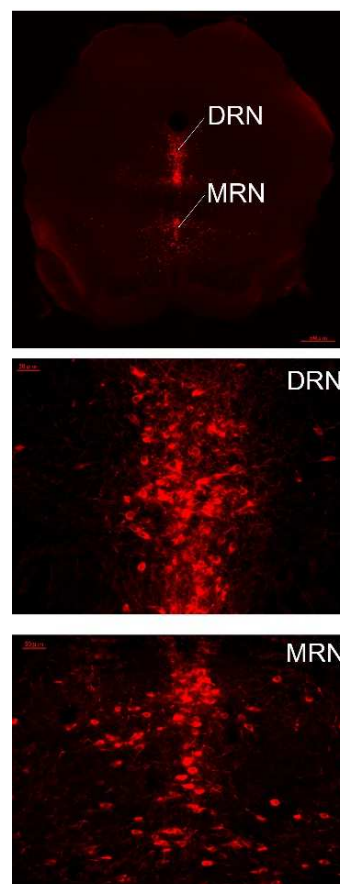
Specificity : This selectively stains serotonergic neurons in the raphe nuclei, including the median and dorsal raphe nuclei in the midbrain.

Applications : In general, affinity-purified antibody is used at around 1 microgram/ml for immunoblot and immunohistochemistry. The most appropriate concentration should be determined by users, because it depends on contents in given cells, tissues and organs.

Research Use : For research use only, not for use in diagnostic procedures.

Remarks :

Reference :



Research & Development

FRONTIER INSTITUTE co.,ltd.

FRONTIER INSTITUTE Co., Ltd.
1-777-12, Shinko-nishi, Ishikari, Hokkaido 061-3241 Japan
TEL (0)133-73-9194 FAX (0)133-73-4567
e-mail : info@frontier-institute.com
URL : <http://www.frontier-institute.com/>